



Mount Grove

£2,300

Cosway Estates are pleased to offer for rent this large extended four bedroom semi-detached house in a sought after location. The property is very well presented throughout. This property comprises of three receptions rooms; separate fitted kitchen/diner; two bathrooms and four bedrooms. Further benefits include rear garden and off-street parking. Located close to the amenities and transport links of Edgware and Mill Hill. AVAILABLE NOW. Viewings highly advised.

Viewing

Please contact our Mill Hill Office on 02089590011 if you wish to arrange a viewing appointment for this property or require further information.



4



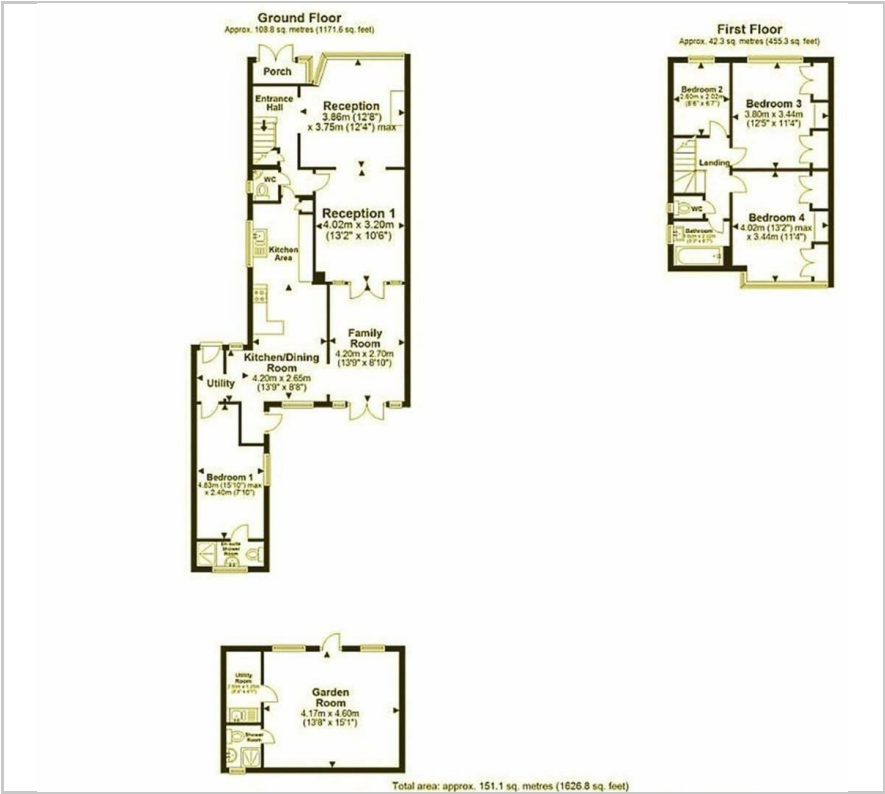
2



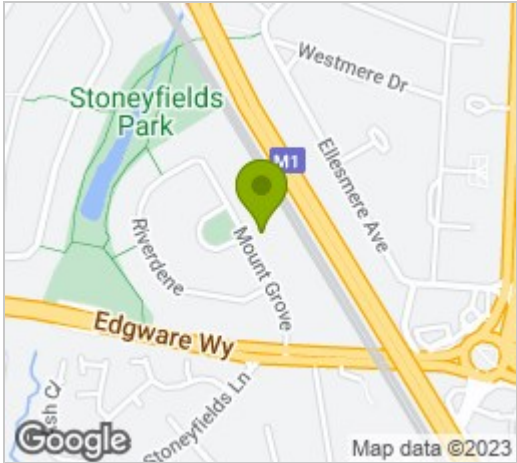
3



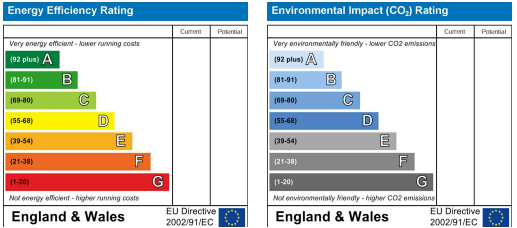
Floor Plan



Area Map



Energy Efficiency Graph



These particulars, whilst believed to be accurate are set out as a general outline only for guidance and do not constitute any part of an offer or contract. Intending purchasers should not rely on them as statements of representation of fact, but must satisfy themselves by inspection or otherwise as to their accuracy. No person in this firms employment has the authority to make or give any representation or warranty in respect of the property.